



17 Odessa Park, Gloucester Road, Tewkesbury, GL20 7DA

£140,000

CHOSEN  
ESTATE AGENTS

## THE PROPERTY

Welcome to this charming park home located in the picturesque Odessa Park on Gloucester Road, Tewkesbury.

The property features an open plan living diner, creating a warm and inviting atmosphere for you to enjoy. A light and airy kitchen comprising integrated fridge freezer and cooker. There is also an incredibly useful utility room boasting plumbing for a washing machine. With two sizeable bedrooms, there is ample space for a small family or guests to stay over comfortably.

Imagine waking up to stunning, far-reaching views of the beautiful rural setting that surrounds this home!

The outdoor space includes a seating area, ideal for enjoying a morning coffee or hosting a summer barbecue with friends and family.

With a total of 752 sq ft, this over 50's park home offers a perfect blend of comfort and style. Additionally, off road parking ensures convenience for you and your guests. Whether you are looking for a peaceful retreat or a cosy home to make your own, this property in Odessa Park is sure to capture your heart. Don't miss the opportunity to own a piece of tranquility in this lovely setting.

Agents Note.

Pitch Fee: £152 per month payable to site owner.

Council Tax Band: A


EPC Rating: Exempt

Mains Gas, Electric and Water are connected.

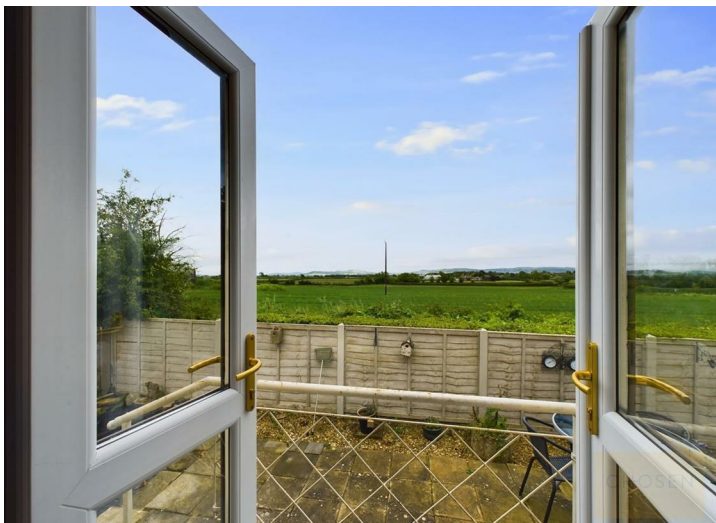
Over 50's complex.

- Two Bedroom Detached Park Home
- Stunning Views
- Bathroom And Separate WC
- Popular Development
- Living/Dining Room
- Off Road Parking
- Utility Room
- Council Tax Band: A

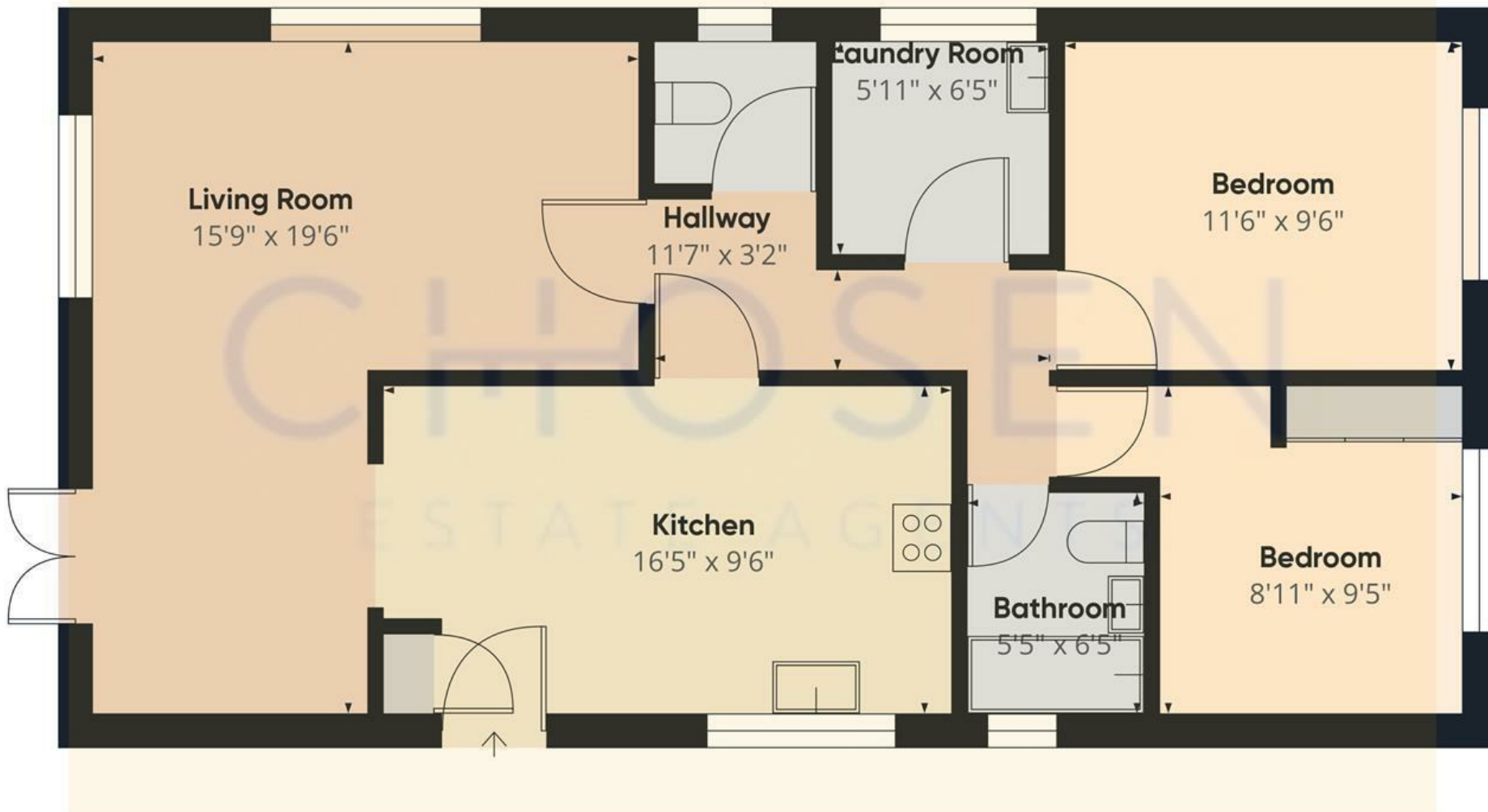
### Energy Efficiency Rating

	Current	Potential
Very energy efficient - lower running costs		
(92 plus) <b>A</b>		
(81-91) <b>B</b>		
(69-80) <b>C</b>		
(55-68) <b>D</b>		
(39-54) <b>E</b>		
(21-38) <b>F</b>		
(1-20) <b>G</b>		
Not energy efficient - higher running costs		
<b>England &amp; Wales</b>	EU Directive 2002/91/EC	









Approximate total area<sup>(1)</sup>  
752.42 ft<sup>2</sup>

(1) Excluding balconies and terraces

While every attempt has been made to ensure accuracy, all measurements are approximate, not to scale. This floor plan is for illustrative purposes only.

GIRAFFE360